

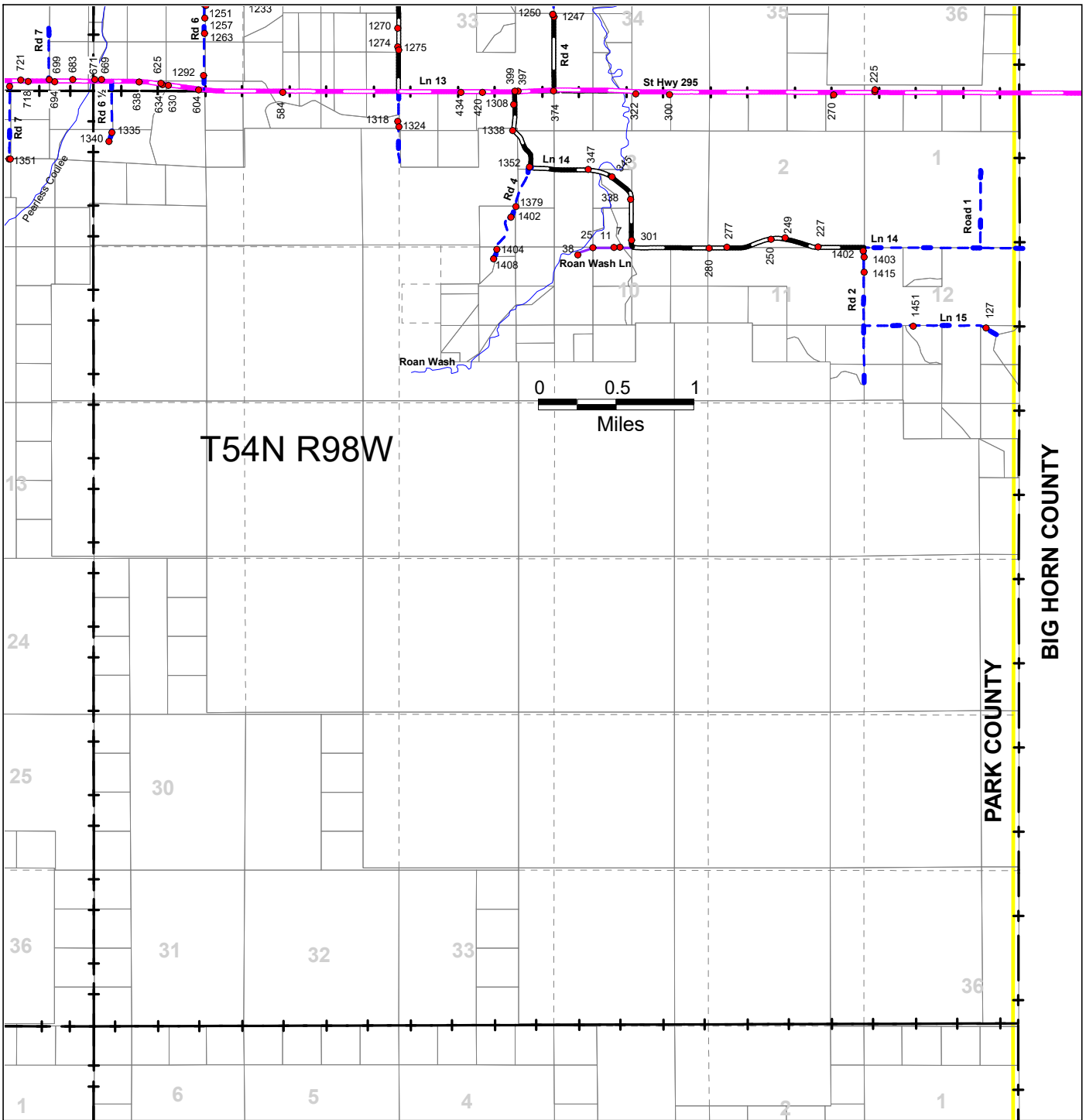
T54N R98W

54098

PAGE REFERENCE:

| | | |
|-------|-------|-----|
| 55099 | 55098 | N/A |
| 54099 | 54098 | N/A |
| N/A | N/A | N/A |

This map is for informational purposes only. The location and extent of roads, accesses, and property lines depicted hereon do not guarantee legal right of passage, ingress and egress, or property boundaries.



- County Maintained
 - Chip Sealed
 - Dirt (various grades)
- State Maintained
 - Chip Sealed
 - Forest Service Maintained
 - Dirt (various grades)
 - Private Road
 - Various Surfaces



Cross Reference Road List:
St Hwy 295 = Ln 13